



## 4HK1 Crankshaft Sensor Part No 8-97306113-1 for Advanced Bulldozer Excavator Design

Our Product Introduction

for more products please visit us on excavator-electricalparts.com

### Basic Information

- Place of Origin: Guangdong, China
- Brand Name: HOWE
- Price: \$53.00 - \$69.00/pieces
- Packaging Details: packed by neutral standard export carton with shockproof foam and waterproof membrane



### Product Specification

- Condition: New, 100%New Durable Long Life
- Applicable Industries: Building Material Shops, Machinery Repair Shops, Manufacturing Plant, Construction Works
- Showroom Location: None
- Video Outgoing-inspection: Not Available
- Machinery Test Report: Not Available
- Marketing Type: New Product 2020
- Warranty: 1 Year
- Application: 4HK1
- Part No: 8-97306113-1
- Usage: Bulldozer Excavator
- MOQ: 1 Piece
- Brand: HOWE
- Product Keywords: Excavator Sensor  
Excavator Electrical Parts



### More Images



## Product Description



**HOWE**

**YEARS OF EXPERIENCE**

**GUANGZHOU HOWE MACHINERY  
EQUIPMENT CO., LTD.**

Tel/WhatsApp: 86 13500222479  
Skype: howeleona  
Email: leona@howeparts.com

### PRODUCT DESCRIPTION

#### 4HK1 crankshaft sensor 8-97306113-1

<b>Brand</b>	HOWE
<b>Product Name</b>	crankshaft sensor
<b>Part Number</b>	8-97306113-1
<b>Model</b>	4HK1
<b>Warranty</b>	6-12 months
<b>Condition</b>	100% high quality
<b>MOQ</b>	1 Piece
<b>Stock</b>	In Stock
<b>Payment</b>	Trade Assurance, Western Union, Bank Account
<b>Delivery</b>	Within 3dys
<b>Shipment</b>	Express(DHL/UPS/EMS/FEDEX/TNT), Air, Sea
<b>Main Products</b>	Controller, Monitor, Wire Harness, Throttle Motor, Sensor, Solenoid Valve, AC Control Panel, Diagnostic Tool

Our Product Introduction

for more products please visit us on excavator-electricalparts.com







**ITEMS FEATURES:**

- 1, Heat-resistant
- 2, Beautiful looks
- 3, strict process
- 4, long working life
- 5, nice quality and nice price



## PRODUCTION PROCESS



## OUR COMPANY



### ABOUT US

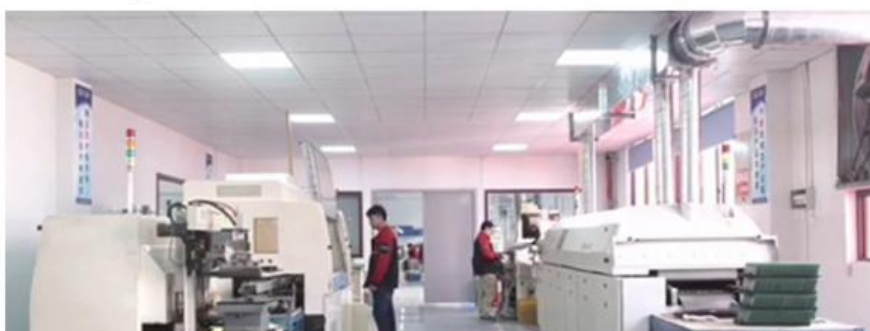
Guangzhou  
Howe  
Machinery  
Equipment  
Co., Ltd.

Guangzhou Howe Machinery Equipment Co., Ltd. is an engineering machinery parts company specializing in the development, production, sales and maintenance of excavator electrical parts.

### WORKSHOP

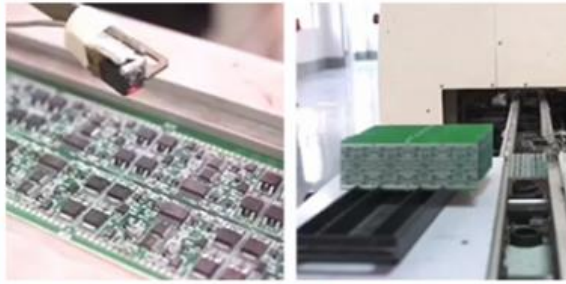
Our products include: ECU controller, monitor, throttle motor, wiring harness, air condition panel, solenoid valves, sensor, pressure switch and other electric parts apply for KOMATSU , CATERPILLAR, HITACHI, DAEWOO, KATO, KOBELCO, SUMITOMO, VOLVO, SANY etc. As well as we repair ECU controller, monitor, ECU reprogramming and reset timing.

WORKSHOP





We have more than 10 years of working experience in the field of construction machinery accessories, have first-class technical staff and excellent sales service team to provide customers with good pre-sales and after-sales service. Our company has always adhering the principle "quality first, service first, technical guidance, win-win cooperation" to providing customers with high-quality products and services, we have won great supports from customers around the world, and sincerely look forward to working with new and old customers at home and abroad to establish long-term cooperation and mutually beneficial cooperation.



## MAIN PRODUCTS



## WHY CHOOSE US



## Advantages

- 1) Various excavator electric parts for you to choose
- 2) Quality guarantee and 100% testing before shipped
- 3) We provide **1 year** warranty time
- 4) Professional technical support and after-sale service
- 5) Timely delivery



**MOQ:1**



**12 months  
warranty time**



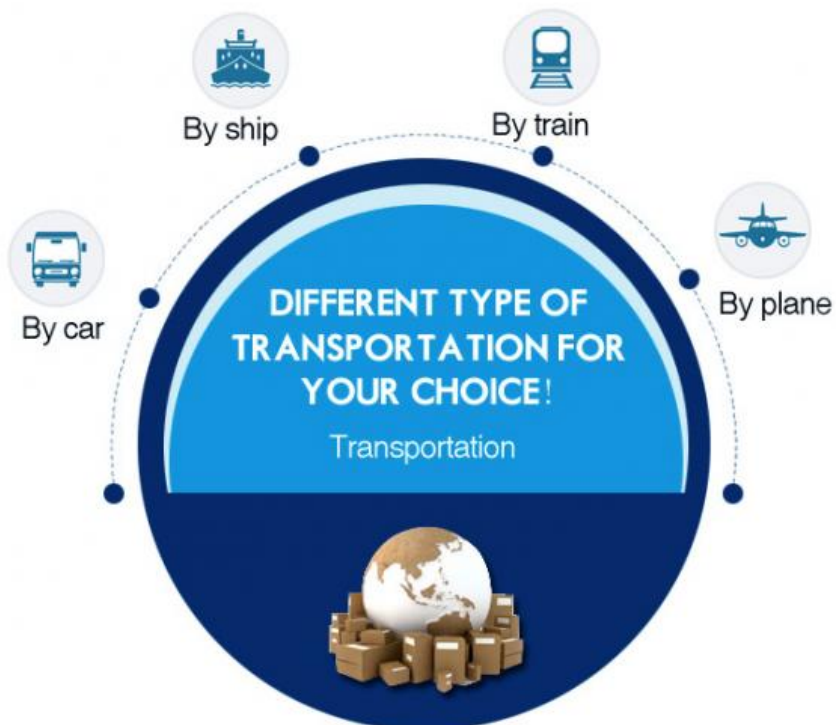
**24 hours  
on-line service**



**Within 1 week  
delivery**

howeparts.en.alibaba.com

## SHIPMENT & PAYMENT



**High Speed**

Express for sample or urgently orders!





Trade Assurance

**Alibaba Trade Assurance :**

A FREE Payment Protection Service

- ✓ 100% Product quality protection.
- ✓ 100% On-time shipment protection.
- ✓ 100% Payment protection.



Telegraphic transfer



**Any other needed or question, welcome to contact us or leave your message, we will reply ASAP!**

**Q1. How do you ensure the quality of your products**

A: we will 100% test before delivery and we have 1 year warranty for all OEM parts.

**Q2. How to proceed an order?**

A: Firstly, let us know your demand products information, such as machine model, photo, part number, nameplate and quantity for reference. Secondly, we quote according to your requirements and send an PI. Thirdly, customer confirms and make the payment. Fourthly, we arrange to ship the products.

**Q3. What is your terms of payment?**

A: 100% payment before delivery.

You can pay through Alibaba trade assurance, western union, T/T.

**Q4. How do you ship the goods and how long does it take to arrive?**

A: We usually ship by DHL, FedEx or TNT etc. It usually takes 3-5 days to arrive. Airline and sea shipping also optional.



**Guangzhou Howe Machinery Equipment Co., Ltd.**

☎ 13500222479

✉ [vivian-excavator@howe-parts.com](mailto:vivian-excavator@howe-parts.com)

🌐 [excavator-electricalparts.com](http://excavator-electricalparts.com)

No.61, Zhuji Road, Tianhe District, Guangzhou City, Guangdong Province