



## D06FR Diesel Engine Fuel Pump 0445020608 32R65-00100 For SY245 SY265 Excavator

Our Product Introduction

for more products please visit us on excavator-electricalparts.com

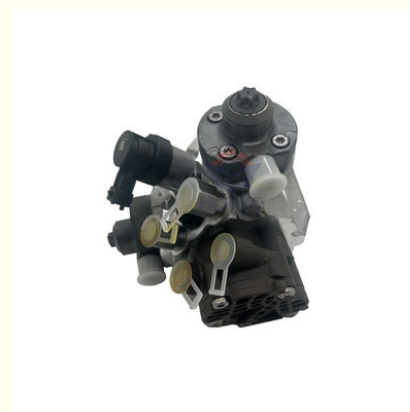
### Basic Information

- Place of Origin: Guangdong, China
- Brand Name: HOWE
- Price: \$200.00 - \$500.00/pieces
- Packaging Details: packed by neutral standard export carton with shockproof foam and waterproof membrane
- Supply Ability: 1000 Pack/Packs per Month



### Product Specification

- Condition: New
- Applicable Industries: Building Material Shops, Machinery Repair Shops, Manufacturing Plant, Construction Works
- Showroom Location: None
- Video Outgoing-inspection: Provided
- Machinery Test Report: Not Available
- Marketing Type: Hot Product 2019
- Warranty: 1 Year, 12 Months
- Part Name: Excavator Fuel Pump
- Part Number: 0445020608 32R65-00100
- Brand: HOWE
- MOQ: 1 Piece
- Packing: Carton
- Quality: High Guarantee
- Type: Electric Parts



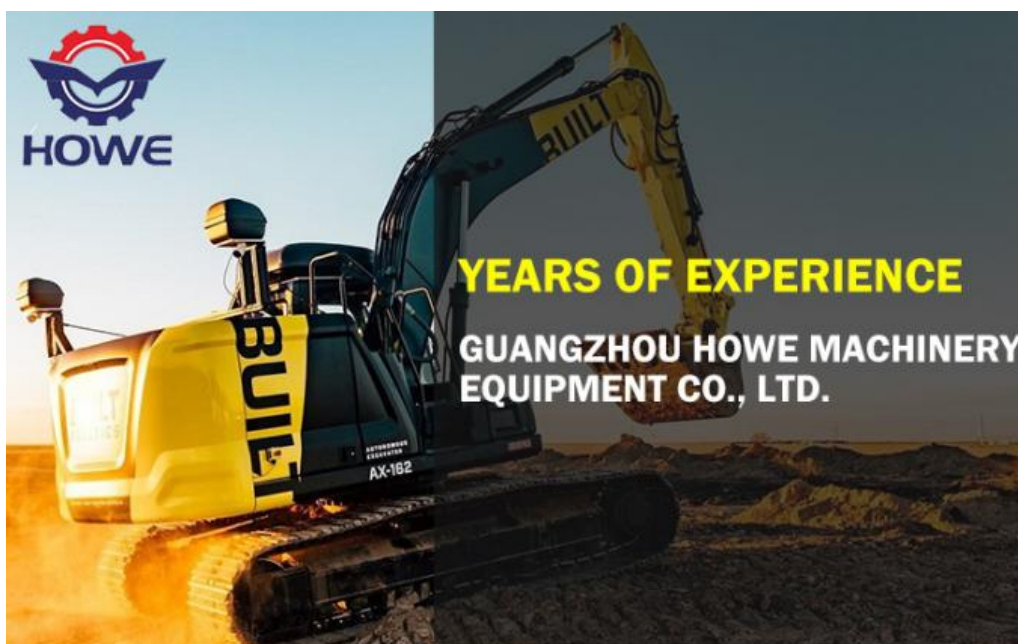
### More Images



## Product Description

Our Product Introduction

for more products please visit us on [excavator-electricalparts.com](http://excavator-electricalparts.com)



## WHY CHOOSE US



Heavy Inventory



Various Model



Customizable



Quality Service



QA



Fast Delivery

## PRODUCT DESCRIPTION

D06FR Diesel Engine Fuel Pump 0445020608 32R65-00100 For SY245 SY265 Excavator

<b>Brand</b>	HOWE	<b>Condition</b>	new
<b>MOQ</b>	1 piece	<b>Quality</b>	guarantee
<b>Stock</b>	in stock	<b>Payment</b>	trade assurance,western union,bank transfer
<b>Warranty</b>	1 year	<b>Delivery</b>	usually 1-3 days



## FUEL PUMP

<b>Model</b>	SY245 Fuel Pump
<b>Application</b>	SY265 series Excavator are available
<b>Material</b>	imported components
<b>Usage</b>	long life service
<b>Other available products</b>	many kinds of controller, monitor, wire harness, throttle motor, solenoid valve, pressure sensor and other parts





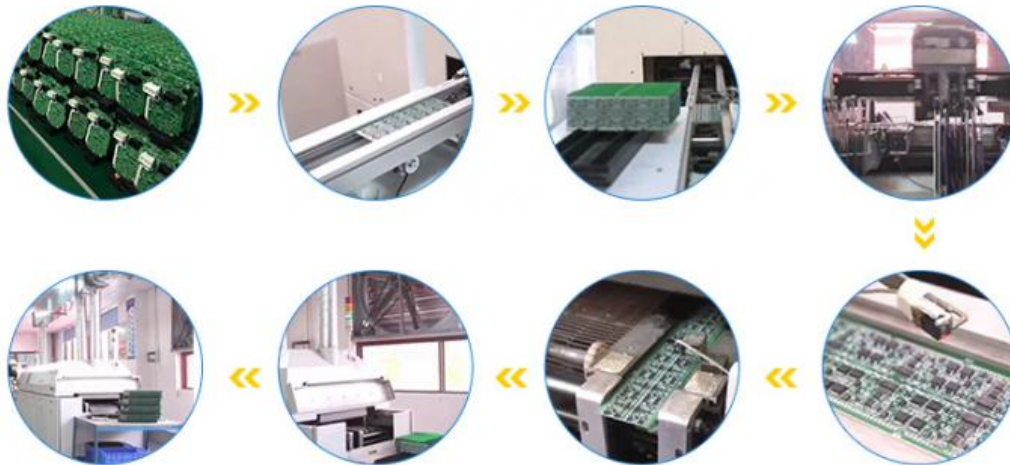








## PRODUCTION PROCESS



## MAIN PRODUCTS

ECU  
controller



Monitor



Wire  
Harness



Throttle  
Motor



Solenoid  
Valves



Pressure  
Sensor



## OUR COMPANY



## ABOUT US

Guangzhou  
Howe  
Machinery





Machinery  
Equipment  
Co., Ltd.

Guangzhou Howe Machinery Equipment Co., Ltd. is an engineering machinery parts company specializing in the development, production, sales and maintenance of excavator electrical parts.

## WORKSHOP

### WORKSHOP

Our products include: ECU controller, monitor, throttle motor, wiring harness, air condition panel, solenoid valves, sensor, pressure switch and other electric parts apply for KOMATSU, CATERPILLAR, HITACHI, DAEWOO, KATO, KOBELCO, SUMITOMO, VOLVO, SANY etc. As well as we repair ECU controller, monitor, ECU reprogramming and reset timing.

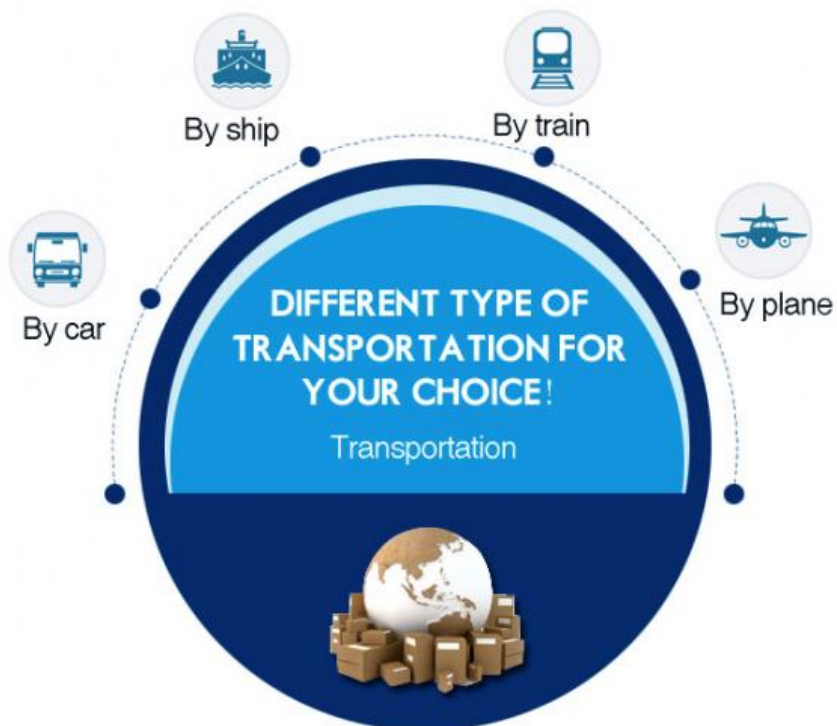


We have more than 10 years of working experience in the field of construction machinery accessories, have first-class technical staff and excellent sales service team to provide customers with good pre-sales and after-sales service. Our company has always adhering the principle "quality first, service first, technical guidance, win-win cooperation" to providing customers with high-quality products and services, we have won great supports from customers around the world, and sincerely look forward to working with new and old customers at home and abroad to establish long-term cooperation and mutually beneficial cooperation.



### SHIPMENT & PAYMENT





**High Speed**  
Express for sample or urgently orders!



Trade Assurance

**Alibaba Trade Assurance :**

A FREE Payment Protection Service

- ✓ 100% Product quality protection.
- ✓ 100% On-time shipment protection.
- ✓ 100% Payment protection.



Telegraphic transfer



**Q1. What is your terms of packing?**

A: Generally, we pack our goods in neutral carton boxes or original package.

**Q2. What is your terms of payment?**

A: You can pay by Alibaba trade assurance, western union, China bank or T/T.

**Q3. What is your terms of delivery?**

A: EXW, FOB.

**Q4. How about your delivery time?**

A: Generally, we will arrange to ship to cargo in 1-3 days (depend on your order quantity)

**Q5: How long is the warranty time?**

- A: 1. All OEM parts have 1 year warranty time;  
2. Usually genuine parts no have warranty time.



Product Paramenters



**Guangzhou Howe Machinery Equipment Co., Ltd.**



13500222479



vivian-excavator@howe-parts.com



excavator-electricalparts.com

No.61, Zhuji Road, Tianhe District, Guangzhou City, Guangdong Province