



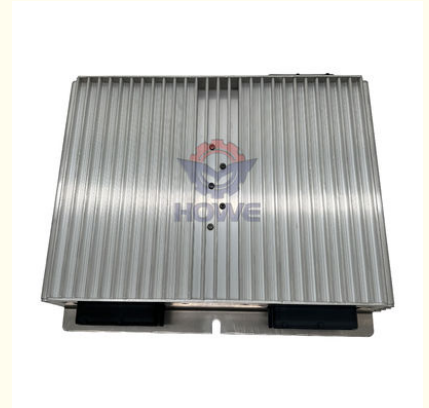
L60E L120E Truck Electronic Control Unit A25D Engine Controller 11185050 VOE11185050

Our Product Introduction

for more products please visit us on excavator-electricalparts.com

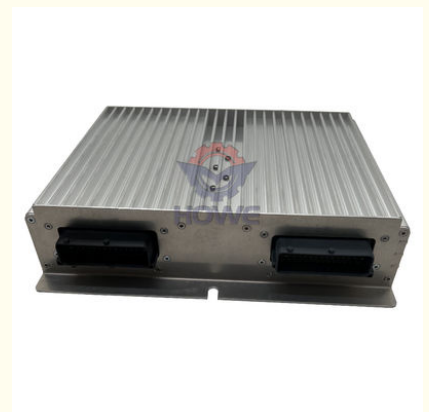
Basic Information

- Place of Origin: Guangdong, China
- Brand Name: HOWE
- Minimum Order Quantity: 5 pieces
- Price: \$300.00/pieces >=5 pieces

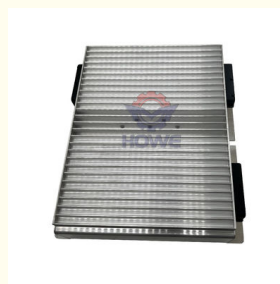
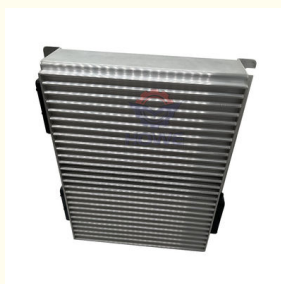


Product Specification

- Condition: New
- Applicable Industries: Building Material Shops, Machinery Repair Shops, Manufacturing Plant, Construction Works
- Showroom Location: None
- Video Outgoing-inspection: Provided
- Machinery Test Report: Not Available
- Marketing Type: Hot Product 2019
- Warranty: 1 Year, 12 Months
- Part Name: Excavator Engine Controller
- Part Number: 11185050 VOE11185050
- Brand: HOWE
- MOQ: 1 Piece
- Packing: Carton
- Quality: High Guarantee
- Type: Electronic Parts



More Images



Product Description

Our Product Introduction

for more products please visit us on excavator-electricalparts.com



WHY CHOOSE US



Heavy Inventory



Various Model



Customizable



Quality Service



QA



Fast Delivery

PRODUCT DESCRIPTION

L60E L120E Truck Electronic Control Unit A25D Engine Controller 11185050 VOE11185050

Brand	HOWE	Condition	new
MOQ	1 piece	Quality	guarantee
Stock	in stock	Payment	trade assurance western union bank transfer
Warranty	1 year	Delivery	usually 1-3 days

CONTROLLER

Model L60E L120E Engine Controller

Application A25D series excavator are available

Material imported components

Usage long life service

Other available products many kinds of controller, monitor, wire harness, throttle motor, solenoid valve, pressure sensor and other parts













PRODUCTION PROCESS



MAIN PRODUCTS

ECU
controller



Monitor



Wire
Harness



Throttle
Motor



Solenoid
Valves



Pressure
Sensor



OUR COMPANY



ABOUT US

Guangzhou
Howe
Machinery
Equipment
Co., Ltd.

Guangzhou Howe Machinery Equipment Co., Ltd. is an engineering machinery parts company specializing in the development, production, sales and maintenance of excavator electrical parts.

WORKSHOP

Our products include: ECU controller, monitor, throttle motor, wiring harness, air condition panel, solenoid valves, sensor, pressure switch and other electric parts apply for KOMATSU, CATERPILLAR, HITACHI, DAEWOO, KATO, KOBELCO, SUMITOMO, VOLVO, SANY etc. As

WORKSHOP

well as we repair ECU controller, monitor, ECU reprogramming and reset timing.



We have more than 10 years of working experience in the field of construction machinery accessories, have first-class technical staff and excellent sales service team to provide customers with good pre-sales and after-sales service. Our company has always adhering the principle "quality first, service first, technical guidance, win-win cooperation" to providing customers with high-quality products and services, we have won great supports from customers around the world, and sincerely look forward to working with new and old customers at home and abroad to establish long-term cooperation and mutually beneficial cooperation.



SHIPMENT & PAYMENT



By ship



By train



Trade Assurance

Alibaba Trade Assurance :

A FREE Payment Protection Service

- ✓ 100% Product quality protection.
- ✓ 100% On-time shipment protection.
- ✓ 100% Payment protection.



Telegraphic transfer



FAQ

Q1. What is your terms of packing?

A: Generally, we pack our goods in neutral carton boxes or original package.

Q2. What is your terms of payment?

A: You can pay by Alibaba trade assurance, western union, China bank or T/T.

Q3. What is your terms of delivery?

A: EXW, FOB.

Q4. How about your delivery time?

A: Generally, we will arrange to ship to cargo in 1-3 days (depend on your order quantity)

Q5: How long is the warranty time?

- A: 1. All OEM parts have 1 year warranty time;
2. Usually genuine parts no have warranty time.



GUANGZHOU HOWE MACHINERY EQUIPMENT CO., LTD.

Looking forward to cooperating with you!

Product Parameters



Guangzhou Howe Machinery Equipment Co., Ltd.



13500222479



vivian-excavator@howe-parts.com



excavator-electricalparts.com

No.61, Zhuji Road, Tianhe District, Guangzhou City, Guangdong Province