



156-6155 CAT Excavator Controller for 311C 312C 315C 318C 320C 322C 325C 330C 345C 365C 385C

Our Product Introduction

for more products please visit us on excavator-electricalparts.com

Basic Information

- Place of Origin: Guangdong, China
- Brand Name: HOWE
- Price: \$300.00 - \$1,000.00/pieces
- Packaging Details: 156-6155 packed by neutral standard export carton with shockproof foam and waterproof membrane
- Supply Ability: 100 Piece/Pieces per Month



Product Specification

- Condition: New
- Applicable Industries: Building Material Shops, Machinery Repair Shops, Manufacturing Plant, Construction Works
- Showroom Location: None
- Warranty: 1 Year
- After Warranty Service: Video Technical Support, Online Support
- Local Service Location: None
- After-sales Service Provided: Video Technical Support, Online Support
- Product Name: Excavator ECM Control Unit
- Application: 311C 312C 315C 318C 320C 322C 325C 330C 345C 365C 385C
- Part No: 156-6155
- MOQ: 1 Piece
- Brand: HOWE



Product Description



HOWE

YEARS OF EXPERIENCE

GUANGZHOU HOWE MACHINERY EQUIPMENT CO., LTD.

Tel/WhatsApp: 86 13500222479
 Skype: howeleona
 Email: leona@howeparts.com

PRODUCT DESCRIPTION

ECM 156-6155 FOR 311C 312C 315C 318C 320C 322C 325C 330C 345C 365C 385C

Brand	HOWE
Product Name	excavator ECM
Part Number	156-6155
Model	311C 312C 315C 318C 320C 322C 325C 330C 345C 365C 385C
Warranty	6-12 months
Condition	100% high quality
MOQ	1 Piece
Stock	In Stock
Payment	Trade Assurance, Western Union, Bank Transfer
Delivery	Within 3dys
Shipment	Express(DHL/UPS/EMS/FEDEX/TNT), Air, Sea
Main Products	Controller, Monitor, Wire Harness, Throttle Motor, Sensor, Solenoid Valve, AC Control Panel, Diagnostic Tool

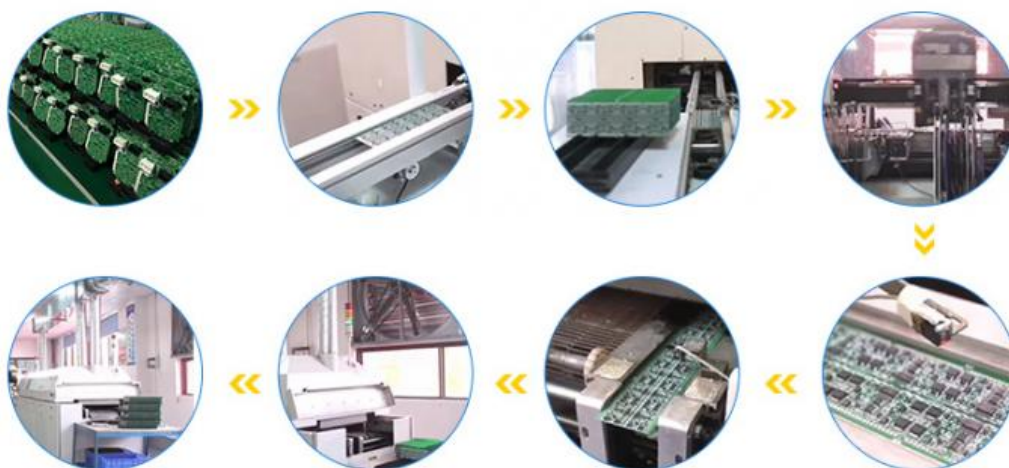




ITEMS FEATURES:

- 1, Genuine parts
- 2, 100% tested before shipped
- 3, Long working life
- 4, Nice price
- 5, Various programming can be supplied

PRODUCTION PROCESS



OUR COMPANY



ABOUT US

Guangzhou
Howe
Machinery
Equipment
Co., Ltd.

Guangzhou Howe Machinery Equipment Co., Ltd. is an engineering machinery parts company specializing in the development, production, sales and maintenance of excavator electrical parts.

WORKSHOP

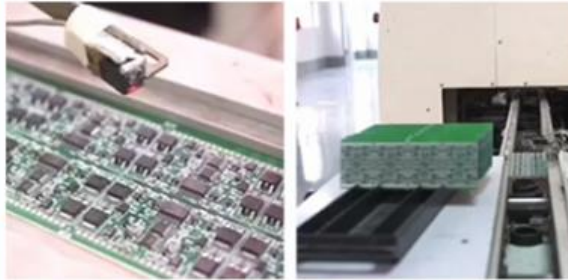
Our products include: ECU controller, monitor, throttle motor, wiring harness, air condition panel, solenoid valves, sensor, pressure switch and other electric parts apply for KOMATSU , CATERPILLAR, HITACHI, DAEWOO, KATO, KOBELCO, SUMITOMO, VOLVO, SANY etc. As



well as we repair ECU controller, monitor, ECU reprogramming and reset timing.



We have more than 10 years of working experience in the field of construction machinery accessories, have first-class technical staff and excellent sales service team to provide customers with good pre-sales and after-sales service. Our company has always adhering the principle "quality first, service first, technical guidance, win-win cooperation" to providing customers with high-quality products and services, we have won great supports from customers around the world, and sincerely look forward to working with new and old customers at home and abroad to establish long-term cooperation and mutually beneficial cooperation.



MAIN PRODUCTS



WHY CHOOSE US



Heavy Inventory



Various Model



Customizable



Quality Service



QA



Fast Delivery

Advantages

- 1) Various excavator electric parts for you to choose
- 2) Quality guarantee and 100% testing before shipped
- 3) We provide **1 year** warranty time
- 4) Professional technical support and after-sale service
- 5) Timely delivery



MOQ:1



**12 months
warranty time**



**24 hours
on-line service**



**Within 1 week
delivery**

SHIPMENT & PAYMENT




By ship



By train








Trade Assurance


Alibaba Trade Assurance :

A FREE Payment Protection Service


- ✓ 100% Product quality protection.
- ✓ 100% On-time shipment protection.
- ✓ 100% Payment protection.




PayPal



Telegraphic transfer



WESTERN UNION



MoneyGram

Any other needed or question, welcome to contact us or leave your message, we will reply ASAP!

Q1. How do you ensure the quality of your products?

A: we will 100% test before delivery and we have 1 year warranty for all OEM parts.

Q2. How to proceed an order?

A: Firstly, let us know your demand products information, such as machine model, photo, part number, nameplate and quantity for reference.

Secondly, we quote according to your requirements and send an PI.

Thirdly, customer confirms and make the payment.

Fourthly, we arrange to ship the products.

Q3. What is your terms of payment?

A: 100% payment before delivery.

You can pay through Alibaba trade assurance, western union, T/T.

Q4. How do you ship the goods and how long does it take to arrive?

A: We usually ship by DHL, FedEx or TNT etc. It usually takes 3-5 days to arrive. Airline and sea shipping also optional.



GUANGZHOU HOWE MACHINERY EQUIPMENT CO., LTD.

Looking forward to cooperating with you!



Guangzhou Howe Machinery Equipment Co., Ltd.



13500222479



vivian-excavator@howe-parts.com



excavator-electricalparts.com

No.61, Zhuji Road, Tianhe District, Guangzhou City, Guangdong Province