



R210W-9 R210W-9A Excavator Electrical Parts Hydraulic Controller Computer Board 21Q6-32202 21Q6-32202-01

Our Product Introduction

for more products please visit us on excavator-electricalparts.com

Basic Information

- Place of Origin: Guangdong, China
- Brand Name: HOWE
- Model Number: R210W-9 R210W-9A
- Minimum Order Quantity: 1PC
- Price: \$300.00 - \$600.00/pieces
- Payment Terms: T/T, Western Union

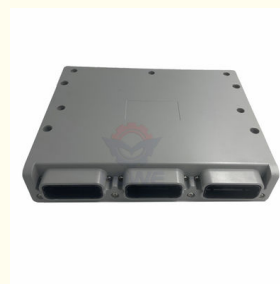
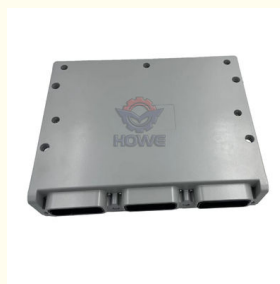


Product Specification

- Condition: New
- Applicable Industries: Building Material Shops, Machinery Repair Shops, Manufacturing Plant, Construction Works
- Showroom Location: None
- Video Outgoing-inspection: Provided
- Machinery Test Report: Not Available
- Marketing Type: Hot Product 2019
- Warranty: 1 Year, 12 Months
- Part Name: Excavator Throttle Controller
- Part Number: 21Q6-32202 21Q6-32202-01
- Brand: HOWE
- MOQ: 1 Piece
- Packing: Carton
- Quality: High Guarantee
- Type: Electrical Parts



More Images



Product Description



PRODUCT DESCRIPTION

R210W-9 R210W-9A Excavator Electrical Parts Hydraulic Controller Computer Board 21Q6-32202 21Q6-32202-01

Brand	HOWE	Condition	new
MOQ	1 piece	Quality	guarantee
Stock	in stock	Payment	trade assurance,western union,bank transfer
Warranty	1 year	Delivery	usually 1-3 days



CONTROLLER

Model	R210W-9 Hydraulic Controller
Application	R210W-9A series Excavator are available
Material	imported components
Usage	long life service
Other available products	many kinds of controller, monitor, wire harness, throttle motor, solenoid valve, pressure sensor and other parts





Various excavator parts are available
Welcome to contact us



Manufacturer direct

Long service life

Fast delivery

Technical support



About US



Guangzhou HOWE Machinery Equipment Co., Ltd is specialize in excavator electric spare parts for more than 10 years, our major products including controller, monitor, throttle motor, wire harness and so on.

We are committed to our customers:

- 100% high quality
- 100% inspected
- 100% nice price
- 100% excellent service

Testing



Work Shop

Our factory have the first-class production equipment to ensure the quality of our products



warehouse

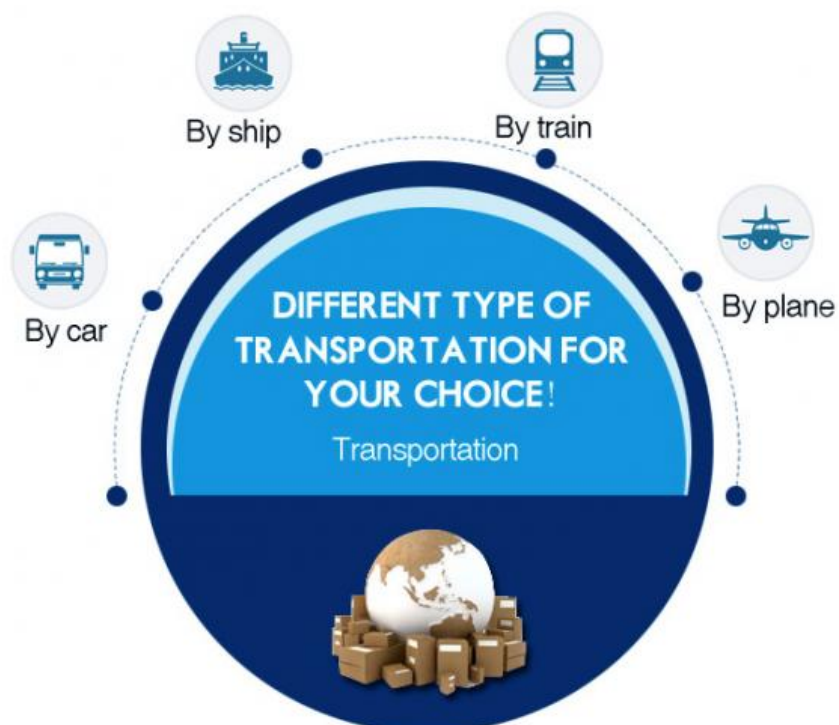


showroom



Repair studio

SHIPMENT & PAYMENT



High Speed
Express for sample or urgently orders!



Trade Assurance

Alibaba Trade Assurance :

A FREE Payment Protection Service

- ✓ 100% Product quality protection.
- ✓ 100% On-time shipment protection.
- ✓ 100% Payment protection.



Telegraphic transfer



FAQ

Q1. What is your terms of packing?

A: Generally, we pack our goods in neutral carton boxes or original package.

Q2. What is your terms of payment?

A: You can pay by Alibaba trade assurance, western union, China bank or T/T.

Q3. What is your terms of delivery?

A: EXW, FOB.

Q4. How about your delivery time?

A: Generally, we will arrange to ship to cargo in 1-3 days (depend on your order quantity)

Q5: How long is the warranty time?

- A: 1. All OEM parts have 1 year warranty time;
2. Usually genuine parts no have warranty time.



**GUANGZHOU HOWE
MACHINERY EQUIPMENT CO., LTD.**

Looking forward to cooperating with you!



Guangzhou Howe Machinery Equipment Co., Ltd.



13500222479



vivian-excavator@howe-parts.com



excavator-electricalparts.com

No.61, Zhuji Road, Tianhe District, Guangzhou City, Guangdong Province