



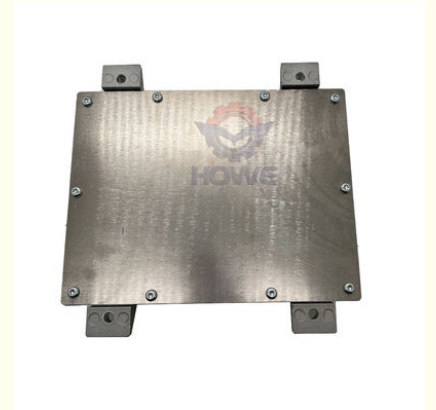
EC140B Excavator Electrical Parts D4D Engine Controller Computer Board 10555535 20824172 05212212B

Our Product Introduction

for more products please visit us on excavator-electricalparts.com

Basic Information

- Place of Origin: Guangdong, China
- Brand Name: HOWE
- Model Number: EC140B
- Minimum Order Quantity: 1PC
- Price: \$300.00 - \$600.00/pieces
- Payment Terms: T/T, Western Union

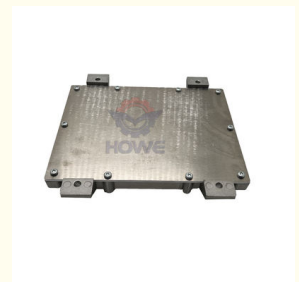


Product Specification

- Condition: New
- Applicable Industries: Building Material Shops, Machinery Repair Shops, Manufacturing Plant, Construction Works
- Showroom Location: None
- Video Outgoing-inspection: Provided
- Machinery Test Report: Not Available
- Marketing Type: Hot Product 2019
- Warranty: 1 Year, 12 Months
- Part Name: Excavator Throttle Controller
- Part Number: 10555535 20824172 05212212B
- Brand: HOWE
- MOQ: 1 Piece
- Packing: Carton
- Quality: High Guarantee
- Type: Electric Parts



More Images



Product Description



PRODUCT DESCRIPTION

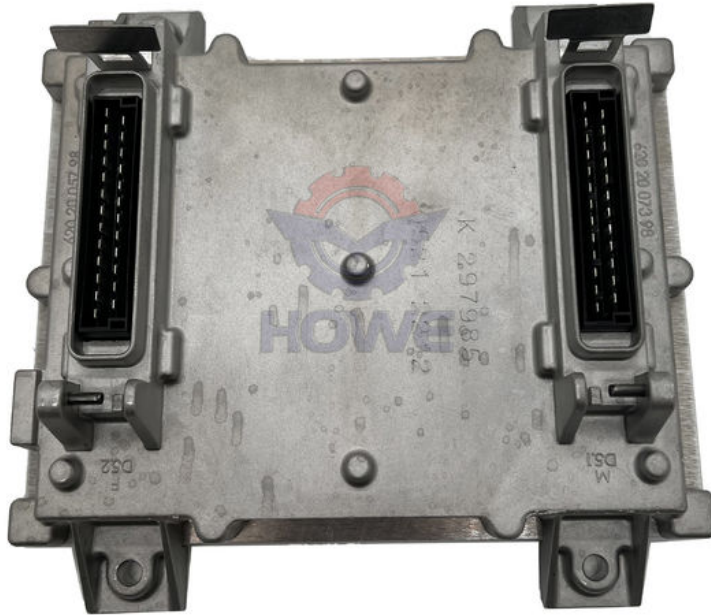
EC140B Excavator Electrical Parts D4D Engine Controller Computer Board 10555535 20824172 05212212B

| | | | |
|-----------------|----------|------------------|---|
| Brand | HOWE | Condition | new |
| MOQ | 1 piece | Quality | guarantee |
| Stock | in stock | Payment | trade assurance,western union,bank transfer |
| Warranty | 1 year | Delivery | usually 1-3 days |



CONTROLLER

| | |
|---------------------------------|--|
| Model | EC140B Engine Controller |
| Application | EC140B series Excavator are available |
| Material | imported components |
| Usage | long life service |
| Other available products | many kinds of controller, monitor, wire harness, throttle motor, solenoid valve, pressure sensor and other parts |





Various excavator parts are available
Welcome to contact us

Manufacturer direct **Long service life** **Fast delivery** **Technical support**

About US

Guangzhou HOWE Machinery Equipment Co., Ltd is specialize in excavator electric spare parts for more than 10years.our major products including controller, monitor, throttle motor, wire harness and so on.

Work Shop
 Our factory have the first-class production equipment to ensure the quality of our products

We are committed to our customers:

- 100% high quality
- 100% inspected
- 100% nice price
- 100% excellent service

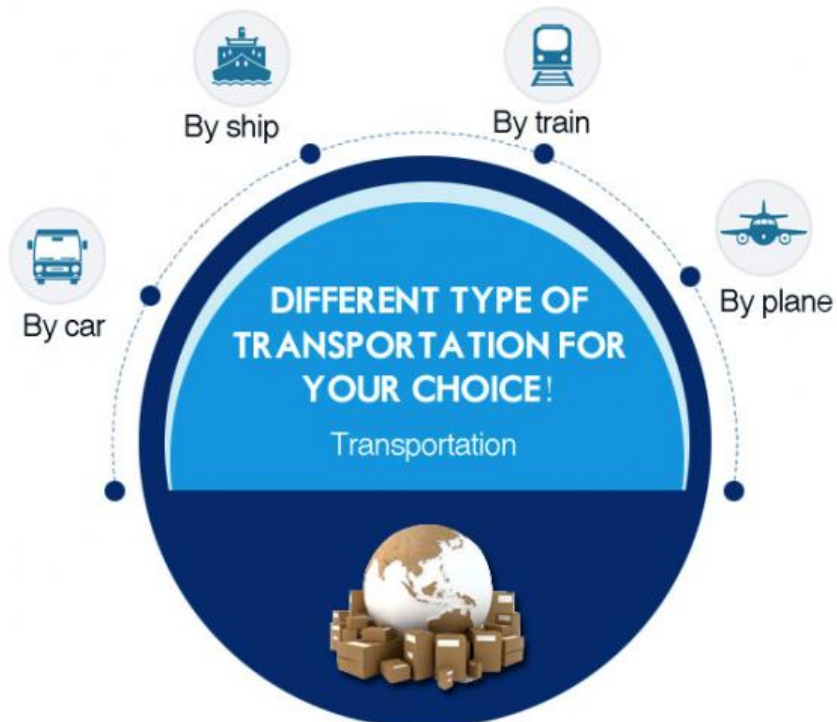
Testing

warehouse **showroom**



Repair studio

SHIPMENT & PAYMENT



High Speed
Express for sample or urgently orders!



Trade Assurance

Alibaba Trade Assurance :

A FREE Payment Protection Service

- ✓ 100% Product quality protection.
- ✓ 100% On-time shipment protection.
- ✓ 100% Payment protection.



Telegraphic transfer



FAQ

Q1. What is your terms of packing?

A: Generally, we pack our goods in neutral carton boxes or original package.

Q2. What is your terms of payment?

A: You can pay by Alibaba trade assurance, western union, China bank or T/T.

Q3. What is your terms of delivery?

A: EXW, FOB.

Q4. How about your delivery time?

A: Generally, we will arrange to ship to cargo in 1-3 days (depend on your order quantity)

Q5: How long is the warranty time?

- A: 1. All OEM parts have 1 year warranty time;
2. Usually genuine parts no have warranty time.



**GUANGZHOU HOWE
MACHINERY EQUIPMENT CO., LTD.**


Looking forward to cooperating with you!



Guangzhou Howe Machinery Equipment Co., Ltd.

 13500222479

 vivian-excavator@howe-parts.com

 excavator-electricalparts.com

No.61, Zhuji Road, Tianhe District, Guangzhou City, Guangdong Province