



## Excavator Electrical Parts Control Unit SH210-5 CX210 Hydraulic Controller KHR10026 KHR10028

Our Product Introduction

for more products please visit us on [excavator-electricalparts.com](http://excavator-electricalparts.com)

### Basic Information

- Place of Origin: Guangdong, China
- Brand Name: HOWE
- Model Number: SH210-5 CX210
- Minimum Order Quantity: 1PC
- Price: \$300.00 - \$600.00/pieces
- Payment Terms: T/T, Western Union

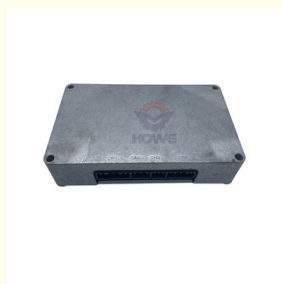


### Product Specification

- Condition: New
- Applicable Industries: Building Material Shops, Machinery Repair Shops, Manufacturing Plant, Construction Works
- Showroom Location: None
- Video Outgoing-inspection: Provided
- Machinery Test Report: Not Available
- Marketing Type: Hot Product 2019
- Warranty: 1 Year, 12 Months
- Part Name: Excavator Throttle Controller
- Part Number: KHR10026 KHR10028
- Brand: HOWE
- MOQ: 1 Piece
- Packing: Carton
- Quality: High Guarantee
- Type: Electric Parts



### More Images



## Product Description



## HOWE PARTS



**controller**  
Program ready  
Plug and play



**monitor**  
Imported components  
Clear display



**Wire harness**  
High temperature resistant  
Standard size

**Throttle motor**  
High precision  
High strength  
Flame retardant



## OUR ADVANTAGES

## Quality Assurance

All products have long warranty time, all products will be inspected before shipped .

## 10+ Years Experience to be Professional

We are professional manufacturer of excavator electric aftermarket replacement for more than 10 years.

## High Productivity

We have adequate stock to ensure fast delivery.

## Experienced R&amp;D Team

We have a professional R&D team, OEM/ODM orders can be accepted, we try our best to meet your requirements

## PRODUCT DESCRIPTION

Excavator Electrical Parts Control Unit SH210-5 CX210 Hydraulic Controller KHR10026 KHR10028

<b>Brand</b>	HOWE	<b>Condition</b>	new
<b>MOQ</b>	1 piece	<b>Quality</b>	guarantee
<b>Stock</b>	in stock	<b>Payment</b>	trade assurance,western union,bank transfer
<b>Warranty</b>	1 year	<b>Delivery</b>	usually 1-3 days



## CONTROLLER

<b>Model</b>	SH210-5 Hydraulic Controller
<b>Application</b>	CX210 series Excavator are available
<b>Material</b>	imported components
<b>Usage</b>	long life service
<b>Other available products</b>	many kinds of controller, monitor, wire harness, throttle motor, solenoid valve, pressure sensor and other parts





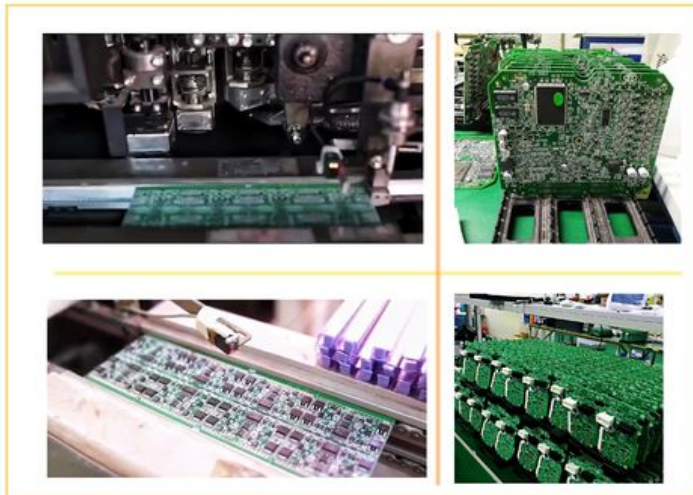
### *About us*

Quality first, service first, technical guidance, win-win cooperation !





**Advanced production equipment**



Strict  
production  
process



**Various excavator parts are available  
Welcome to contact us**



**Manufacturer  
direct**

**Long  
service life**

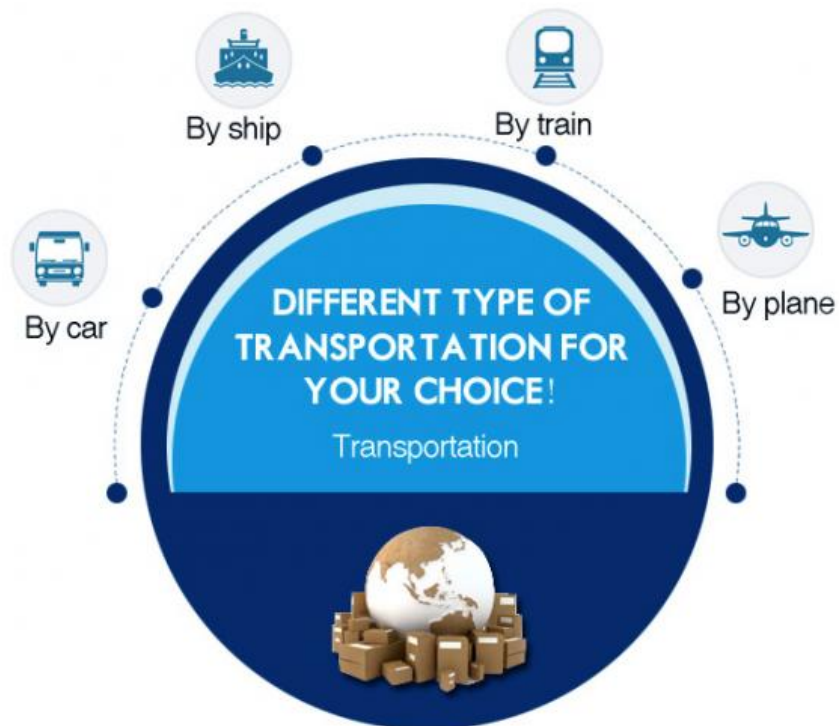
**Fast  
delivery**

**Technical  
support**

**SHIPMENT & PAYMENT**







**High Speed**  
Express for sample or urgently orders!



Trade Assurance

**Alibaba Trade Assurance :**

A FREE Payment Protection Service

- ✓ 100% Product quality protection.
- ✓ 100% On-time shipment protection.
- ✓ 100% Payment protection.



Telegraphic transfer



## FAQ

**Q1. What is your terms of packing?**

A: Generally, we pack our goods in neutral carton boxes or original package.

**Q2. What is your terms of payment?**

A: You can pay by Alibaba trade assurance, western union, China bank or T/T.

**Q3. What is your terms of delivery?**

A: EXW, FOB.

**Q4. How about your delivery time?**

A: Generally, we will arrange to ship to cargo in 1-3 days (depend on your order quantity)

**Q5: How long is the warranty time?**

- A: 1. All OEM parts have 1 year warranty time;  
2. Usually genuine parts no have warranty time.



Product Paramenters



**Guangzhou Howe Machinery Equipment Co., Ltd.**



13500222479



[vivian-excavator@howe-parts.com](mailto:vivian-excavator@howe-parts.com)



[excavator-electricalparts.com](http://excavator-electricalparts.com)

No.61, Zhuji Road, Tianhe District, Guangzhou City, Guangdong Province