



## Excavator Hydraulic Controller ECU 211-3588 211-5558X for E320C E325C

Our Product Introduction

for more products please visit us on [excavator-electricalparts.com](http://excavator-electricalparts.com)

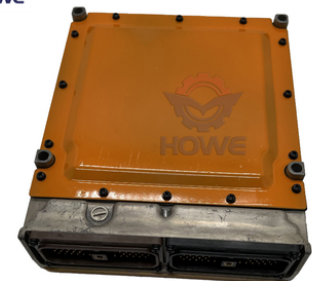
### Basic Information

- Place of Origin: Guangdong, China
- Brand Name: HOWE
- Minimum Order Quantity: 1
- Price: \$750

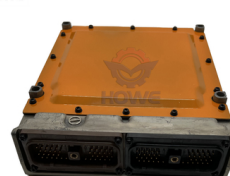
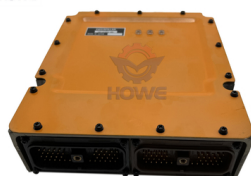


### Product Specification

- Part Number: 211-3588 211-5558X
- Compatible Models: E320C E325C
- Minimum Order: 1 Piece
- Packing Type: Carton
- Product Type: Electric Parts
- Controller Type: Hydraulic Controller
- Warranty Period: 12 Months
- Inspection Service: Video Outgoing-inspection
- After-sales Support: Online Support
- Shipping Methods: Express, Air, Sea
- Brand: HOWE
- Quality Guarantee: High Guarantee
- Payment Method: Trade Assurance
- Stock Availability: 24-hour Dispatch
- Testing Procedure: Professional Test



### More Images



Product Description

Excavator Electronic Control Unit Hydraulic Controller ECU 211-3588 211-5558X for E320C E325C





**YEARS OF EXPERIENCE**

**GUANGZHOU HOWE MACHINERY  
EQUIPMENT CO., LTD.**

**WHATSAPP: +8617276492140**

**E-MAIL: lusenlin052@gmail.com**





**YEARS OF EXPERIENCE**

**GUANGZHOU HOWE MACHINERY  
EQUIPMENT CO., LTD.**

**WHATSAPP: +8617276492140**

**E-MAIL: lusenlin052@gmail.com**

Products	E325C E320C Hydraulic Controller
Quality	High quality
MOQ	1 pcs
Service	Excellent sales team and professional technical support
Shipment	By express, by air or by sea

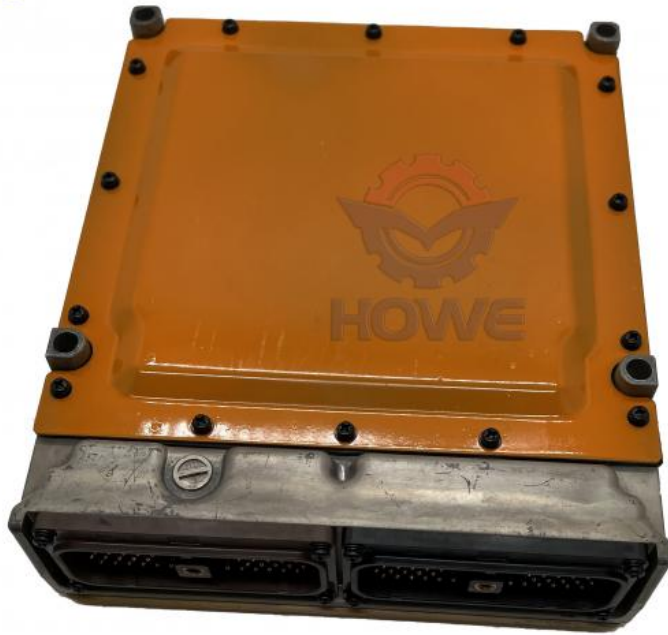
Our Product Introduction

for more products please visit us on [excavator-electricalparts.com](http://excavator-electricalparts.com)









Available Hot Models

Volvo				
20412511	20561252	20561256	20814550	20814594
20814604	20814620	20814642	20814795	20959036
20977019	20995620	21042371	21107008	21248717
21248719	21300060	21300122	21323765	21358126
21631327	21695313	21695319	21900553	21900557
22049094	22091664	22346791	22346792	22423432
22423433	22423434	22423435	22581042	23141251
24425461	60100000	60100001	60100007	60100008
60100011	60100017			
CAT				
T400052	221-8874	221-8874X	290-9479	309-5710
331-7539	340-8157	345-3381	345-3383	345-3385
345-3388	357-2083	366-8821	366-8822	385-8553
394-3902	462-0006	462-0007	462-0008	462-0009
Komatsu/Cummins				
600-461-1100	600-461-1101	600-461-1400	600-461-1401	600-461-2100
600-467-1100	600-467-1300	600-467-1400	600-467-1700	600-467-2100
600-467-3300	600-467-4300	600-468-1200	600-468-1300	600-468-2100
600-468-2101	600-475-1003	600-475-1100	600-475-1300	600-475-1301
600-475-1400	600-475-3502	P4354514	P4354531	3408501
3684275	3965159	4921411	4921776	4921797
4943133	4963807	4988820	4995445	
Hitachi				
YA60001374	YA60001376	YA60001380	YA60005538	YA60008656
YA60023948	YA60027152	YA60030039	YA60030041	YA60047785
YA60047786	YA00011100	YA00011104	YA00004267	YA00004268
YA00004269	YA00004270	YA00004596	YA00004599	YA00008063
YA00008066				

#### Main Product Line

# CONTROLLER



20814604



22346792



22346791



T400052



366-8821



P4921776



21Q9-32180



21Q6-32210



P3681405



YA00004267



YN22E00069F7



YA60001374

## MONITOR DISPLAY



14710109



386-3459



7831-69-1145



7835-35-2003



436-6210



21Q6-33401



14401539



KHR41503



YN59S00011F3



11888261



300426-00049B



2539-1068



## OTHER PRODUCTS



Wire Harness



Wire Harness



Wire Harness



Sensor



Relief Valve



Injector



AC Controller



Oil Pump



Diagnostic



Throttle Motor



Relay



Oystick

### Our Services & Strength

- **Warranty:** All OEM parts have 1 year warranty time
- **Quality guaranteed:** Professional test before shipped
- **Service:** Professional technical support & sales service
- **Delivery:** Within 24 hours if the part is in stock

## OUR ADVANTAGES

### Quality Assurance

All products have long warranty time, all products will be inspected before shipped .

1

### 10+ Years Experience to be Professional

We are professional manufacturer of excavator electric aftermarket replacement for more than 10 years.

2

### High Productivity

We have adequate stock to ensure fast delivery.

3

### Experienced R&D Team

We have a professional R&D team, OEM/ODM orders can be accepted, we try our best to meet your requirements

4

1

MOQ:1

12

12 months  
warranty time


24

24 hours  
on-line service

1

Within 1 week  
delivery

## Company Introduction



**Guangzhou HOWE Machinery Equipment Co., Ltd** is specialize in excavator electric spare parts for more than 10years,our major products including controller, monitor, throttle motor, wire harness and so on.

**Work Shop**

Our factory have the first-class production equipment to ensure the quality of our products



We are committed to our customers:

- 100% high quality
- 100% inspected
- 100% nice price
- 100% excellent service

**Testing**









**warehouse**

**showroom**









**Repair studio**

## FAQ

## FAQ

### 1. Could I have prices of your products?

Welcome. Pls feel free to send us an email here. You will get our reply in 24 hours

### 2. What is your term of payment?

100% payment before delivery.

You can pay through Alibaba online, western union or bank transfer.

### 3. What's the lead time for order?

If goods in stock we will arrange to ship once receive your payment. If not in stock, it may take about 5-10 days for prepare, it also depend on your order quantity.

### 4. Can I get a discount?

Yes, for the order quantity more than 20 pcs, please contact us to get the best price.

### 5. Do you inspect the finished products?

Yes, each step of production and finished products will be came out inspection by QC department before shipping.

### Packing & Shipping



[howeparts.en.alibaba.com](http://howeparts.en.alibaba.com)



Trade Assurance

#### Alibaba Trade Assurance :

A FREE Payment Protection Service

- ✓ 100% Product quality protection.
- ✓ 100% On-time shipment protection.
- ✓ 100% Payment protection.



Telegraphic transfer



**Guangzhou Howe Machinery Equipment Co., Ltd.**



13500222479



[vivian-excavator@howe-parts.com](mailto:vivian-excavator@howe-parts.com)



[excavator-electricalparts.com](http://excavator-electricalparts.com)

No.61, Zhuji Road, Tianhe District, Guangzhou City, Guangdong Province